

PRODUCT CATALOG 2025

furniture boards / high gloss / super matt / wood-like / decorative panels

POLGLOS®

ACTOM

POLGLOS®
NATURA



SKLEJBUD®



TABLE OF CONTENTS:

4 - 5	POLGLOS® HIGH GLOSS High Gloss furniture boards based on mdf
6 - 9	POLGLOS® SUPER MATT Super Matt furniture boards based on mdf
10 - 11	POLGLOS® PARTICLEBOARD Furniture boards with particleboard core
12 - 15	POLGLOS® NATURE Natural wood-like collection

16 - 17	POLGLOS® HPL HPL furniture boards
18 - 21	POLGLOS® PLYWOOD Furniture boards with plywood core
22 - 25	POLGLOS® WALL PANELS Decorative wall panels based on black mdf
26 - 27	DECORATIVE WALL PANELS Decorative panels based on light foam



SKLEJBUD® was founded in 1993. Our production plant is located in Radom, approximately 100 km south of Warsaw, from where we serve domestic and foreign customers. We cooperate with leading furniture factories and carpentry wholesalers, which makes our product - Polglos® boards – well known and appreciated throughout the industry. We are able to meet the highest customer requirements. Our motto is the continuous development of the company. In order to cope with this task, we are expanding our offer with new technologies.



We specialize in the production of high-gloss and super-matt furniture boards under the Polglos® brand. This includes acrylic boards and decorative foils as well. Our offer also covers a line intended for the investment industry Polglos® HPL, the latest Italian wood-like decors presented in the Polglos® Natura collection and light decorative Acfom panels. We kindly invite you to familiarize yourself with our offer. It is possible to evaluate and implement individual projects. We fulfill orders throughout the country and abroad.



POLGLOS® HIGH GLOSS

POLGLOS® HIGH GLOSS boards are manufactured on the basis of raw MDF with a thickness of 17 mm. The top surface is covered with a layer of acrylic 0,5 - 0,9 mm thick, depending on the color. At the customer's request, for certain colors the gloss can be prepared in the form of 0,3 mm PET foil. From the top, the surface is additionally secured with a protective film, which reduces damages and scratches possibility during the production and furniture assembling process. The reverse side is covered with a hips / pp / pvc anti-pressure laminate, which eliminates the risk of board deformation. The color of the balancer always matches to the color of the top layer. During the production process, only waterproof PUR glue is used, in order to ensure the boards do not swell and absorb moisture from the outside.

Product features:



mirror
effect



high gloss
effect



great
quality



color
depth



exclusive
appearance



durability



resistance to UV
radiation



excellent stain
resistance



moisture-
resistance



hydrophobic
properties



POLGLOS® HIGH GLOSS

Technical data

Board dimensions:

2800 × 1220 mm

Board thickness:

premium 18,4 +/-0,3 mm, special 18 +/-0,2 mm

Top layer:

acrylic covered with protective film

Core:

mdf 17 mm

Other possible cores:

mdf 9 mm, black mdf 12 mm, particleboard 16 or 18 mm, plywood 8 - 18 mm, superlight plywood 'sandwich' XPS, light foam 8 mm, flame retardant mdf / particleboard

Balancer / Reverse side:

anti-twisting laminate in the board color

premium - hips 0,5 - 0,8 mm, special - pp/pvc 0,2 mm

On request:

double-sided gloss, '10 mm' board

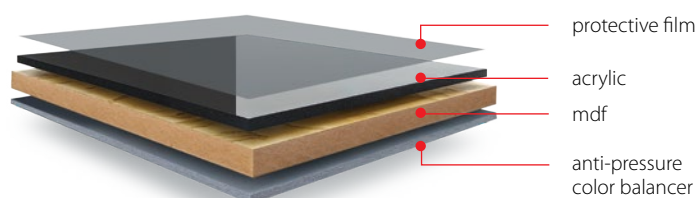
Areas of application:

kitchen and bathroom furniture, built-in furniture, wardrobes, sideboards, interior furnishings in residential construction, stands, clinics, offices, modular houses, campers and trailers, wall decorations

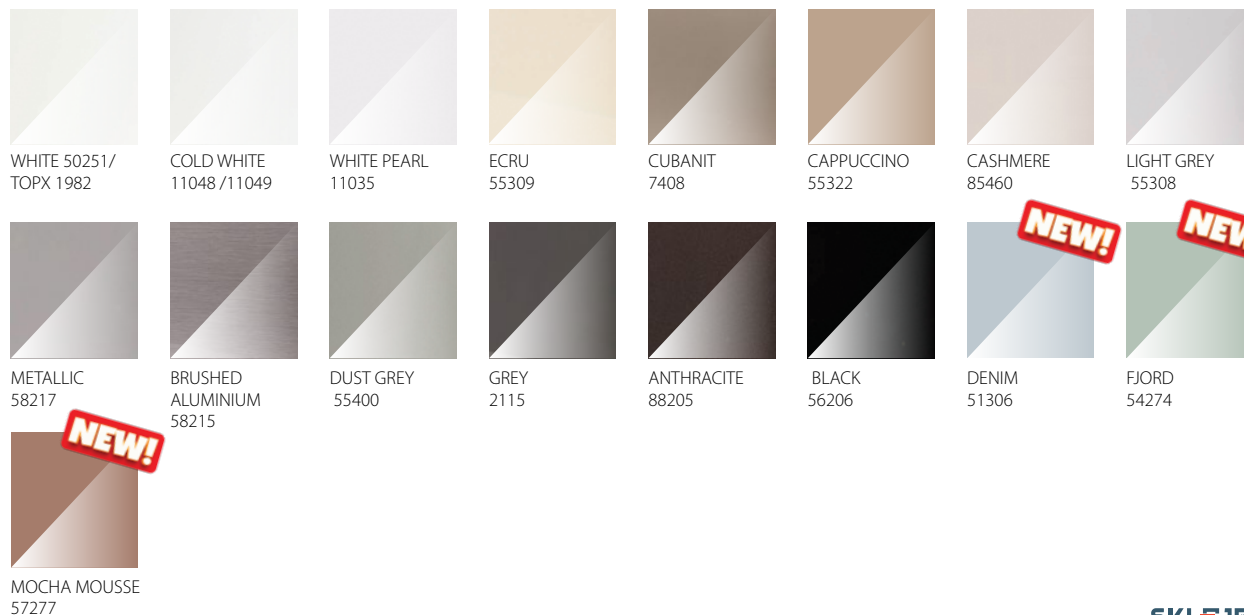
Application: interior design, vertical orientation or delicate horizontal surfaces / cannot be used as kitchen countertops.

Cleaning and care instruction:

Clean the surface with soft materials, preferably a microfiber cloth and a solution of lukewarm water with mild soap. To keep high gloss on a surface, the boards can also be cleaned with special agents available on the market for the care of acrylic furniture. Avoid acidic substances, strong alkalis, abrasive and corrosive products. Please remove the protective film from the board only after completed renovation. Before removing it, make sure the surrounding area is clean and dust-free. Acrylic gloss is beautiful and unique material, even with its hardened surface, after removing the protective film, wait few hours until the material starts to 'breathe' and enjoy the high quality for many years.



Available colors:





POLGLOS® **SUPER MATT**

POLGLOS® SUPER MATT boards are manufactured on the basis of raw MDF board with a thickness of 17 mm. The top of the board is covered with a layer of acrylic 0,3-0,9 mm thick, depending on the color or with a decorative mat in the form of 0,2-0,3 mm PET foil. From the top, the surface is additionally secured with a protective film, which reduces damages and scratches possibility during the production and furniture assembling process. The boards are often made in a double-sided version. During the production process, only waterproof PUR glue is used, in order to ensure the boards do not swell and absorb the moisture from the outside.

Product features:

- | | | | | | | | | | | |
|---------------------|-----------------|-----------------|----------------------------|------------|-----------------|----------------------------|--------------------|-------------|---------------------|------------------------|
| | | | | | | | | | | |
| perfect matt effect | delicate finish | color stability | resistance to UV radiation | durability | hardened colors | excellent stain resistance | soft-touch surface | anti-finger | moisture-resistance | hydrophobic properties |



POLGLOS® SUPER MATT

Technical data

Board dimensions:

2800 × 1220 mm

Board thickness:

premium 18,3 +/- 0,4 mm, special 17,6 +/- 0,3 mm

Top layer:

acrylic/decorative mat covered with protective film

Core:

mdf 17 mm

Other possible cores:

mdf 9 mm, black mdf 12 mm, particleboard 16 or 18 mm, plywood 8 - 18 mm, superlight plywood 'sandwich' XPS, light foam 8 mm, flame retardant mdf / particleboard

Balancer / Reverse side:

Anti-pressure color matched laminate or double-sided decor for some colors premium - hips 0,5 - 0,8 mm, special - pp/pvc 0,2 mm

On request:

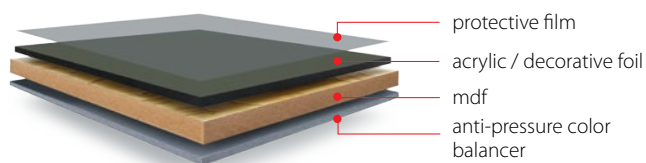
double-sided matt, '10 mm' board

Areas of application:

kitchen and bathroom furniture, built-in furniture, wardrobes, sideboards, interior furnishings in residential construction, stands, clinics, offices, modular houses, campers and trailers, wall decorations / Application: interior design, vertical orientation or delicate horizontal surfaces / cannot be used as kitchen countertops.

Cleaning and care instruction:

After removing the protective film, the surface is ready to use. Clean the boards with soft materials, preferably a microfiber cloth and a solution of lukewarm water with mild soap. The surface can also be maintained with special agents available on the market for the care of acrylic furniture. Avoid acidic substances, strong alkalis, abrasive and corrosive products. Please remove the protective film from the board only after completed renovation. Before removing it, make sure the surrounding area is clean and dust-free.



DENIM 6220*

CASHMERE ROSE 9075*



WHITE SM 11082

ECRU SM 7496

CAPPUCCINO SM 7498

LIGHT GREY SM 85468

DARK GREY SM 85383

BLACK SM 8421

WHITE SK 1796

LIGHT GREY SK 85465

GREY SK 85633

ACRYLICS SUPER MATT



WHITE MD 9046

ECRU MD 9072

LIGHT GREY MD 9060

CASHMERE MD 9071

LATTE MD 9073*

MOCHA MD 9074*

ALU GOLD 3021

ALU ROSE 3022

ALU BROWN 3023

GOLD GP 3020

METALLIC GOLD MD 9803*

METALLIC BLUE MD 9010*

GREEN MD 9602*

ONYX GREY MD 9070

GRAPHITE MD 9100

BLACK FM 7322

SUPER MATT DECORATIVE FOILS

* double-sided boards only



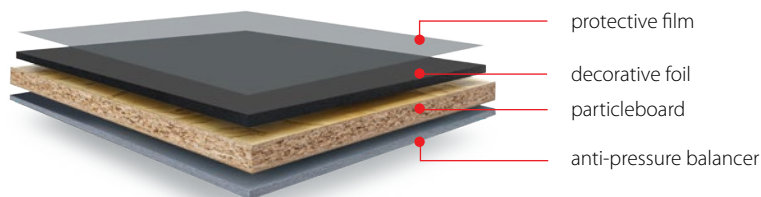




POLGLOS® PARTICLEBOARD

POLGLOS® PARTICLEBOARD panels are manufactured on the basis of particleboard 18 mm thick. The top of the board is mainly covered with a layer of decorative super matt laminate in the form of 0,2 - 0,3 mm PET foil*. The surface is additionally secured with a protective film, which reduces damages and scratches possibility during the production and furniture assembling process. The reverse side is covered with a balancer layer of 0,2 mm pp/pvc anti-pressure material. Balancer eliminates the possibility of board tensions. Decors are often prepared in double-sided version. During the production process, only waterproof PUR glue is used, in order to ensure the boards do not swell and absorb the moisture from the outside. Final thickness of the panel is approximately 18,6 mm.

* It is also possible to prepare gloss and super matt acrylics



POLGLOS® PARTICLEBOARD

Technical data

Board dimensions:

2800 × 1220 mm

Board thickness:

~ 18,6 mm

Top layer:

decorative foil laminate covered with protective film

Core:

particleboard 18 mm

Other possible cores:

particleboard 16 mm

Balancer / Reverse side:

anti-pressure white or color balancer pp / pvc 0,2 mm

On request:

double-sided decors

Areas of application:

system furniture, kitchen and bathroom furniture, built-in furniture, wardrobes, sideboards, interior furnishings in residential construction, stands, clinics, offices, modular houses, campers and trailers, wall decorations / Application: interior design, vertical orientation or delicate horizontal surfaces / can not be used as kitchen.

Cleaning and care instruction:

Clean the boards with soft materials, preferably a microfiber cloth and a solution of lukewarm water with mild soap. The surface can also be cleaned with special agents available on the market for the care of acrylic furniture/foil. Avoid acidic substances, strong alkalis, abrasive and corrosive products. Please remove the protective film from the board only after completed renovation. Before removing it, make sure the surrounding area is clean and dust-free.

Product features:



perfect matt effect



delicate finish



color stability



resistance to UV radiation



durability



hardened colors



excellent stain resistance



soft-touch surface



anti-finger



hydrophobic properties



moisture-resistance

Available colors:



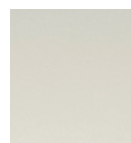
WHITE MD 9046



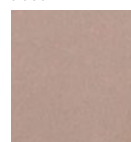
ECRU MD 9072



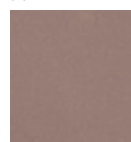
LIGHT GREY MD 9060



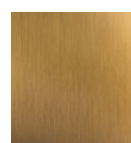
CASHMERE MD 9071



LATTE MD 9073



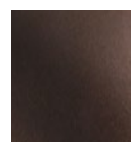
MOCHA MD 9074



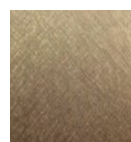
ALU GOLD 3021



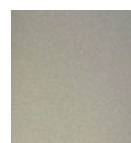
ALU ROSE 3022



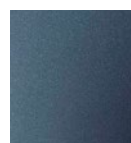
ALU BROWN 3023



GOLD GP 3020



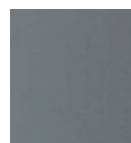
METALLIC GOLD MD 9803



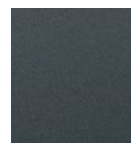
METALLIC BLUE MD 9010



GREEN MD 9602



ONYX GREY MD 9070



GRAPHITE MD 9100



BLACK 7322



DENIM 6220



CASHMERE ROSE 9075*



WHITE GLOSS 50251/11049



CASHMERE GLOSS 85460



POLGLOS® NATURA

POLGLOS® NATURA panels are manufactured on the basis of raw particle board with a thickness of 18 mm. The boards are covered with a layer of ecological CLPL laminate on the top and back as standard. The natural laminate is produced without the use of hazardous substances, formaldehydes, PVC and melamine. During the laminating process, only waterproof PUR glue is used, in order to ensure the boards do not swell and absorb moisture from the outside. The board thickness is approximately 18,6 mm. Product modifications are possible. This collection works great for lightweight structures such as modular houses, houseboats, trailers, campers. It can be prepared on plywood or PVC foam, making it suitable not only for furniture fronts but also for wall and ceiling decorations.

Product features:



natural wood
effect



light finish



color
stability



resistance to UV
radiation



durability



italian
design



decors with
structure



environment
friendly



hardened
colors



color
repeatability



Technical data

Board dimensions:

2800 × 1220 mm

Board thickness:

18,6 mm

Top layer:

ecological CLPL laminate

Core:

particleboard 18mm

Other possible cores:

particleboard 16 mm, MDF 9 or 17 mm, black MDF 12 mm, plywood 8-18 mm, superlight XPS sandwich plywood 15 mm, foam 8 mm, flame retardant MDF / chipboard

Balancer / Reverse side:

double-sided board

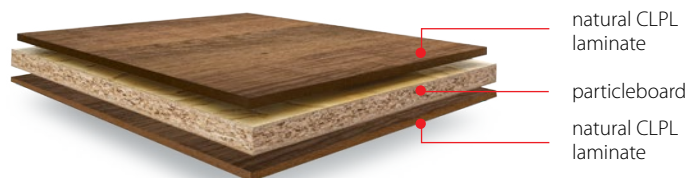
Areas of application:

kitchen and bathroom furniture, built-in furniture, wardrobes, sideboards, interior design in residential construction, modular houses, yachts, campers and trailers, stands, clinics, offices, wall decorations / Application: interior design, vertical orientation or delicate horizontal surfaces / cannot be used as kitchen countertops.

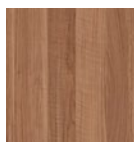
Cleaning and care instruction:

The boards do not require hardening. They are ready to use. Surface should be clean with available cleaning agents intended for household use /preferably mild soap with lukewarm water. Recommended the use of soft cloth and microfiber. Avoid substances like: acidic, strong alkalis, abrasive and corrosive products.

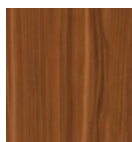
***the collection on flame retardant particle board has a C-s2, d0 certificate**



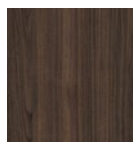
Available colors:



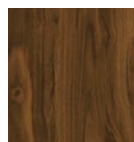
WALNUT 1100



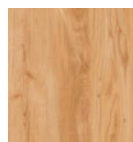
RIALTO WALNUT 1117



ARDENNE WALNUT 1125



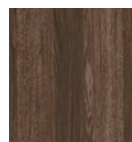
KERKYRA WALNUT 1129



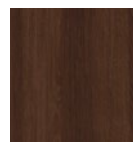
AURORA CHERRY 1214



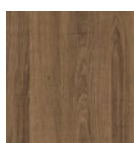
OAK DARK BROWN 1306



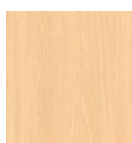
PATINATO OAK 1322



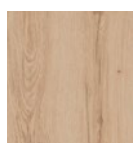
CACAO OAK 1331



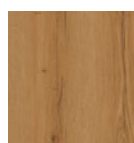
AZTECO OAK 1338



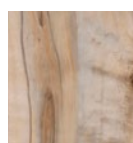
NARCISO OAK 1339



NORDIC NATURAL OAK 1354



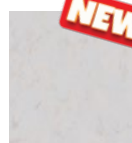
NORDIC TABACCO OAK 1357



SWAMPY MAPLE 1502



CHARRED WOOD 1960



MARMO VESTA 2306



UFFIZI WALNUT 1133







POLGLOS® **HPL**

POLGLOS® HPL panels are manufactured on the basis of flame retardant particleboard or flame retardant MDF 16 - 18 mm. The boards are covered with a layer of HPL laminate with a thickness of 0,6 - 0,9 mm, depending on the color. The back side of the panel has an anti-pressure balancer layer of HPL with a thickness of approximately 0,6 - 0,9 mm, depending on the design and customer's choice. The balancer eliminates the possibility of the board stretching. During the production process, only waterproof PUR glue is used, in order to ensure the boards do not swell and absorb moisture from the outside. The thickness of the board, depending on the design and type of core, ranges from 17 to 20 mm. At the customer's request, we source a proper HPL decor and use a selected flame retardant core.

Product features:



wide range
of decors



scratch
resistance



exceptional
durability



resistance to UV
radiation



vertical & horizontal
orientation



excellent stain
resistance



hardened
colors



color stability



Technical data

Board dimensions:

3050 × 1220 mm

Board thickness:

approximately 17 - 20 mm

Top layer:

HPL 0,6 - 0,9 mm*

Core:

flame retardant particleboard 16 - 18 mm

Other possible cores:

flame retardant MDF16 - 18 mm, plain MDF / particleboard / plywood

Balancer / Reverse side:

anti-pressure HPL laminate

On request:

double-sided HPL, hips/pp balancer

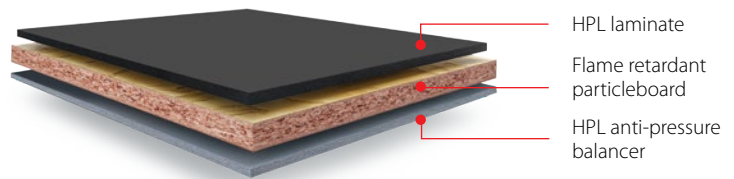
Areas of application:

interior furnishings in residential and investment construction, interior furnishings for hotels and ships, modular houses, yachts, campers, trailers, stands, clinics, offices, halls and catering facilities, kitchen and bathroom furniture, countertops, built-in furniture, wardrobes, sideboards, wall decorations / Application: interior design, vertical orientation and horizontal / most decors can be used as countertops.

Cleaning and care instruction:

The boards do not require hardening. They are ready to use. The surface should be cleaned with available cleaning agents intended for household use / preferably a mild soap with lukewarm water. Recommended the use of soft cloth and microfiber. Avoid substances like: acidic, strong alkalis, abrasive and corrosive products.

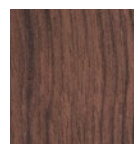
***collection on flame retardant particleboard and flame retardant MDF has a C-s2, d0 certificate**



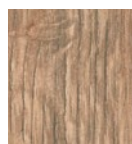
Suggested colors:

The presented colors of HPL boards are only a presentation of our capabilities. The laminate color is prepared for a given project. There are different production minimums for different decors. The HPL decors available in our offer are both glossy and matte. On request we offer super matte HPL with a special soft-touch surface.

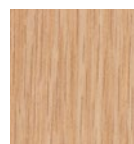
NEW!



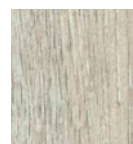
WOOD FOREST



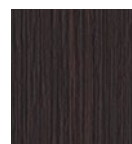
LIGHT OAK 02



LIGHT OAK 04



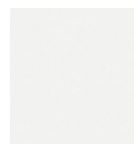
LIGHT OAK 03



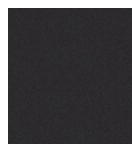
DARK OAK 02



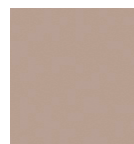
DARK OAK 01



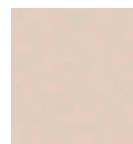
WHITE



BLACK



CAPPUCCINO



ECRÚ



GREY



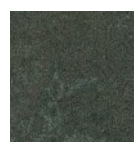
CASHMERE



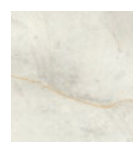
BOTTLE GREEN



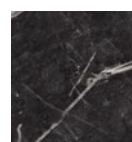
LIGHT GREY



STONE



LIGHT MARBLE



DARK MARBLE



NAVY BLUE



POLGLOS® **PLYWOOD**

The **POLGLOS® PLYWOOD** collection are produced mainly on the basis of poplar plywood with a thickness of 8, 10, 12, 15, 18 mm and lightweight XPS 15 mm plywood, known as 'sandwich' with foam filling inside. From the top the boards are covered with a layer of laminate with a thickness of 0,2 - 0,9 mm. The laminate is of the acrylic / foil / decorative mat type, the finish varies depending on the decor. Matte and glossy colors are additionally secured with protective film. The reverse is covered with a layer of anti-pressure hips / pp / pvc material, which eliminates the possibility of the board stretching. The panels are often made double-sided or with different decors on both sides. During the production process, only waterproof PUR glue is used, in order to ensure the boards do not swell and absorb moisture from the outside.

Product features:



beautiful
design



excellent stain
resistance



lightness



easy to cut



exclusive look



durability



resistance to UV
radiation



speed
in assembly



POLGLOS® PLYWOOD

Technical data

Board dimensions:

2500 x 1220 mm

Board thickness:

depends on the selected plywood thickness

Top layer:

acrylic, foil, wood-like decors, HPL (for special quotes)

Core:

poplar plywood 8, 10, 12, 15, 18 mm - density 470 kg / m³

superlight XPS sandwich plywood 15 mm - density 250 kg / m³

Balancer / Reverse side:

anti-pressure laminate or double-sided board

On request:

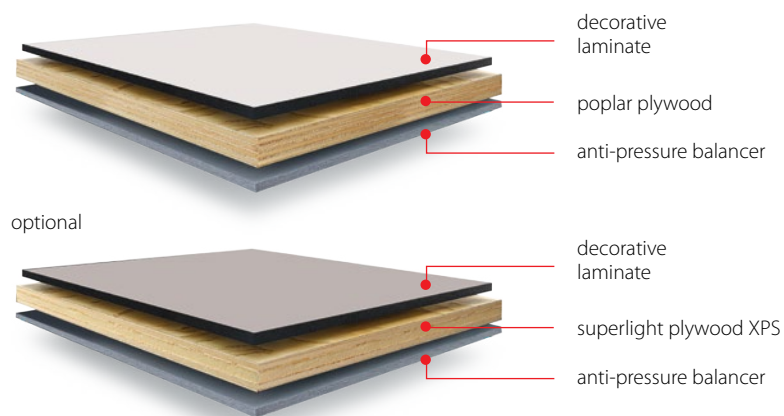
special pricing for other types of plywood

Areas of application:

lightweight construction elements, fronts, bathroom and kitchen furniture, furniture for built-in interior furnishings in residential construction, interior furnishing of ships and caravans, construction of stands, houseboats, campers and modular houses.

Cleaning and care instructions:

The boards do not require hardening. They are ready to use. Surfaces should be clean with available cleaning agents intended for household use, preferably mild soap with lukewarm water. Recommended the use of soft cloth and microfiber. Avoid substances like: acidic, strong alkalis, abrasive and corrosive products.



*Some decors are additionally secured with protective film.

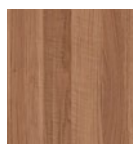
Available colors:



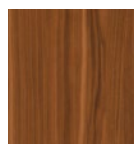
COLD WHITE
11048



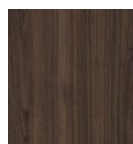
CASHMERE
85460



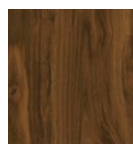
WALNUT
1100



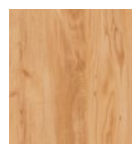
RIALTO WALNUT
1117



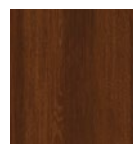
ARDENNE
WALNUT 1125



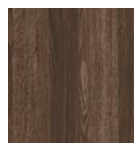
KERKYRA WALNUT
1129



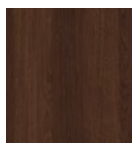
AURORA CHERRY
1214



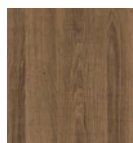
OAK DARK
BROWN 1306



PATINATO OAK
1322



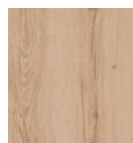
CACAO OAK
1331



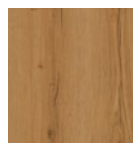
AZTECO OAK
1338



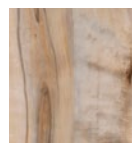
NARCISO OAK
1339



NORDIC NATURAL
OAK 1354



NORDIC TABACCO
OAK 1357



SWAMPY MAPLE
1502



CHARRED WOOD
1960



UFFIZI WALNUT
1133

+ Supermatt colors page 7







POLGLOS® WALL PANELS

POLGLOS® WALL PANELS are made of black MDF with a thickness of 12 mm. From the top boards are covered with a layer of laminate around 0,3 mm thick. The laminate can be made of various materials such as acrylic/foil or wood-like decors. There are 2 types of milling patterns available: slats and mesh. For special projects, it is also possible to prepare other modifications of the cutter. The reverse of panel is additionally secured with an anti-pressure laminate. The total thickness of the board is approximately 12,4 mm.

Product features:



beautiful
design



exclusive
appearance



durability



easy to cut



natural finish



speed in
assembly



large area



wide range of
colors



lightness



POLGLOS® WALL PANELS

Technical data

Panel dimensions:

3000 × 1220 mm

Panel thickness:

12,4 +/- 0,2 mm

Top layer:

acrylic / foil / wood-like decors

Core:

black mdf 12 mm milled

Other possible cores:

stained mdf

Balancer / Reverse side:

anti-pressure laminate 0,2 mm

On request:

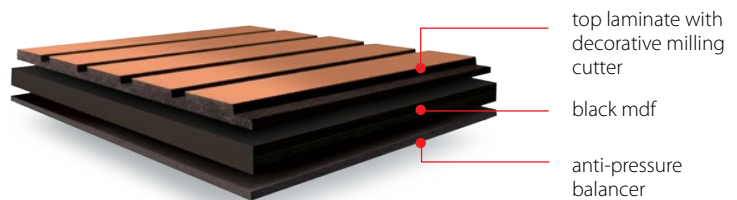
decorative cutter of various types

Areas of application:

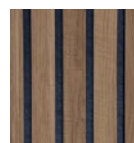
walls, ceilings, decorations, dry surfaces, for application in humid spaces, the material must be impregnated or painted.

Cleaning and care instruction:

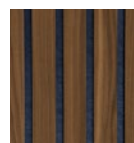
The panels do not require hardening. After installation, they are ready for use. Clean the surface mainly with a dry cloth, wiping away the dust. Alternatively, the cloth can be slightly moistened with water. Recommended the use of soft cloth and microfiber. Avoid substances like: acidic, strong alkalis, abrasive and corrosive products.



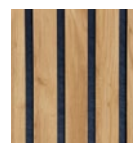
Available colors:



WALNUT
1100



RIALTO WALNUT
1117



AURORA CHERRY
1214



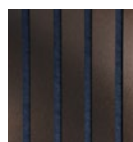
NARCISO OAK
1339



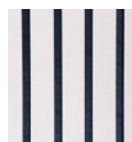
ALU GOLD
3021



ALU ROSE
3022



ALU BROWN
3023



WHITE MD
9046



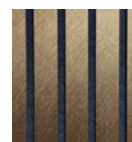
CASHMERE MD
9071



ECRU MD
9072



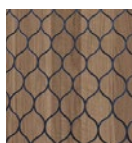
GREEN MD
9602



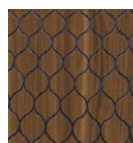
GOLD GP
3020



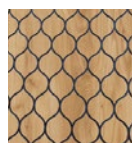
LIGHT GREY
9060



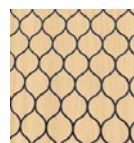
WALNUT
1100



RIALTO WALNUT
1117



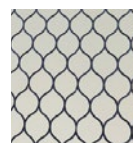
AURORA CHERRY
1214



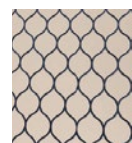
NARCISO OAK
1339



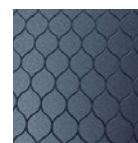
WHITE MD
9046



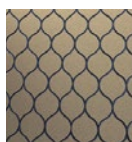
CASHMERE MD
9071



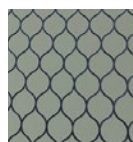
ECRU MD
9072



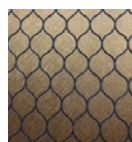
METALLIC BLUE
MD 9010



METALLIC GOLD
MD 9803



GREEN MD
9602



GOLD GP
3020







ACFOM **DECORATIVE PANELS**

ACFOM DECORATIVE PANELS are manufactured on the basis of 8 mm thick foamed PVC board. The surface of panel is covered with a layer of laminate with a thickness of 0,2 - 1,0 mm. The top laminate is a layer of the acrylic / foil / decorative mat type, the finish varies depending on the decor. For some of them the top layer is additionally secured with a protective film. The reverse side is covered with an anti-pressure laminate, which eliminates the risk of board deformation. During the production process, only waterproof PUR glue is used, in order to ensure the panels do not absorb moisture from the outside. The thickness of the panel is approximately 8,6 + / -0,4 mm depending on the decor.

Product features:



beautiful
design



exclusive
appearance



durability



easy to cut



natural finish



speed in
assembly



resistance to UV
radiation



excellent
stain
resistance



moisture
resistance



large area



lightness



ACFOM DECORATIVE PANELS

Technical data

Panel dimensions:

3050 x 1220 mm wood decors

2800 x 1220 mm stone structure / glossy decors

Panel thickness:

8,6 + / - 0,4 mm

Top layer:

acrylic / foil / wood-like decors / HPL

Core:

foamed PVC 8 mm - density 480 kg / m³

Other possible cores:

different foam thickness

Balancer / Reverse side:

anti-pressure laminate 0,2-0,5 mm

On request:

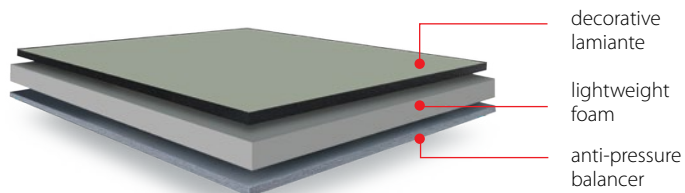
modification of decor and core

Areas of application:

walls, ceilings, furniture, stands, modular houses, yachts, houseboats, trailers, campers, interior and furniture decorations.

Cleaning and care instruction:

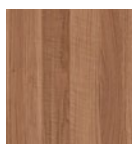
The boards do not require hardening. After installation, panels are ready to use. Clean the surface with mild soap and lukewarm water. Recommended the use of soft cloth and microfiber. Avoid substances like: acidic, strong alkalis, abrasive and corrosive products.



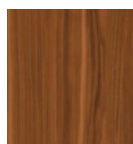
Available colors:



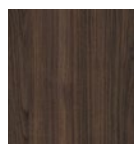
WHITE GLOSS
11048/1982



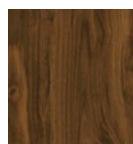
WALNUT
1100



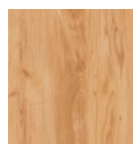
RIALTO WALNUT
1117



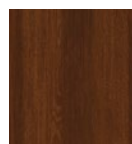
ARDENNE
WALNUT 1125



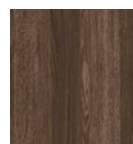
KERKYRA WALNUT
1129



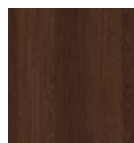
AURORA CHERRY
1214



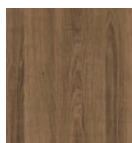
OAK DARK
BROWN 1306



PATINATO OAK
1322



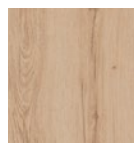
CACAO OAK
1331



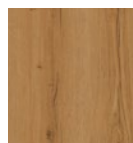
AZTECO OAK
1338



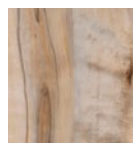
NARCISO OAK
1339



NORDIC NATURAL
OAK 1354



NORDIC TABACCO
OAK 1357



SWAMPY MAPLE
1502



CHARRED WOOD
1960



MARMO VESTA
2306



UFFIZI WALNUT
1133

+ supermatt colors page 7
+ selected HPL decor

SKLEJBUD®

16 Energetyków Street
26-615 Radom, Poland
+48 (48) 363-34-63
+48 (48) 340-53-00
bok@sklejbud.com.pl



www.sklejbud.com.pl



facebook.com/radom.sklejbud



instagram.com/sklejbud



linkedin.com/company/sklejbud-poland

The decors and visualizations presented in the catalog are only inspirations, showing the possibilities of using our products. Colors are only an approximate form of illustrating the collection of furniture and decorative panels. To find out the details of the offer, please contact our sales department.

We are pleased to inform that we have also a network of local distributors of the POLGLOS® brand.

